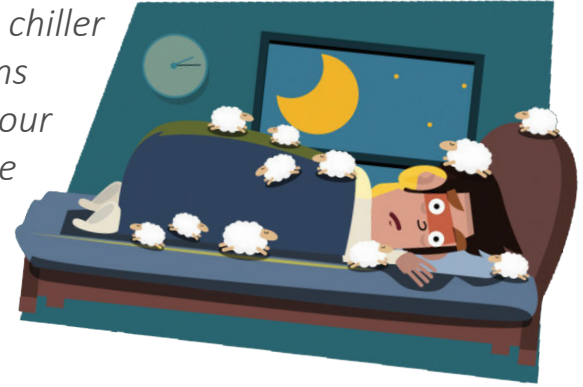


# THE GRAY LINE

By Technical Systems

*When your neighbors can't sleep due to your loud air-cooled chiller AND you find out you are violating nighttime noise restrictions AND you can't find a commercial cooling option that fits in your space or your budget, you have a GRAY problem that only the Technical Systems team can solve. Read more on how they put your problems to rest and save you lots of money.*



## The Problem: A Noisy Neighbor

Residents at a luxurious condo facility had multiple complaints due to the noise created by a commercial grade air cooled chiller placed in the lot next door. This problem chiller used traditional compressors and fans without sound treatment or considerations when it was installed. This chiller exceeded the city's night sound ordinance by over 20 decibels. A replacement solution was needed that would meet code requirements, yet minimize owner costs and fit into the same space as the existing chiller.



## The Solution: TSI's Gray Line Chiller

The Technical Systems team designed a replacement chiller that was fully tested to prove that the unit would perform at less than the city ordinance of 50dBa within 23 feet of a window. This chiller fit the same footprint as the existing chiller which minimized the cost and space impact to the owner. TSI's ability to meet these requirements saved time and money on install as well as eliminating the headache and cost of legal issues.

**...How Did They Do It?  
Read More on Page 2**

**TECHNICAL**  
S Y S T E M S

DIVISION RAE CORPORATION

# ...How Did They Do It?

WE LISTENED.

WE SOLVED.

WE WILL SUPPORT.



The TSI chiller condenser coil and fans were specially selected to meet the jobsite sound requirements. Compressors were housed within an insulated enclosure to ensure proper sound reduction. The resulting performance was 50 dBA at 23 Ft distance.



The chillers sound performance was proven by a factory sound test. Sound measurements were taken with all compressors and fans running at full design load. The test was witnessed by the installing contractor and representative, giving the owner assurance it would perform as promised.

**"I deal with lots of unique applications. I was glad we could get low sound without sacrificing in other areas or breaking the bank. Everyone is sleeping soundly thanks to the TSI team!"**  
— Mark LaFrance, HTS New England



Existing underground electrical and water connections could not be moved. The TSI chiller was designed to specifically match existing locations, eliminating the need for expensive changes in the field.



The TSI chiller included high efficiency compressors and EC motor fans to provide the sound performance needed, yet still meet full and part load efficiencies required by ASHRAE 90.1.



On-board microprocessor controls all functions of the chiller system and provides a BAS connection to the facility.

See and hear (if you can) this unit in action on our YouTube Channel at [www.YouTube.com\RAECorporation](http://www.YouTube.com\RAECorporation) or scan this QR Code with your smartphone.



**TECHNICAL**

S Y S T E M S

DIVISION RAE CORPORATION



4492 Hunt St. Pryor, Ok 74361



[www.RAECorp.com](http://www.RAECorp.com)



(918) 825 - 7222